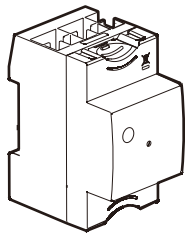
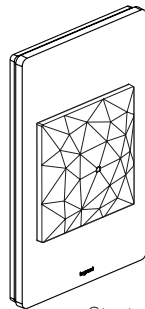


Requires prior installation of Excel Life with Netatmo Gateway or Starter Kit

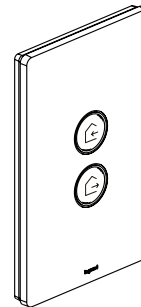


DIN- rail Gateway
(Cat. No. 412181)

OR



Starter Kit
(EWNSKIT Series)

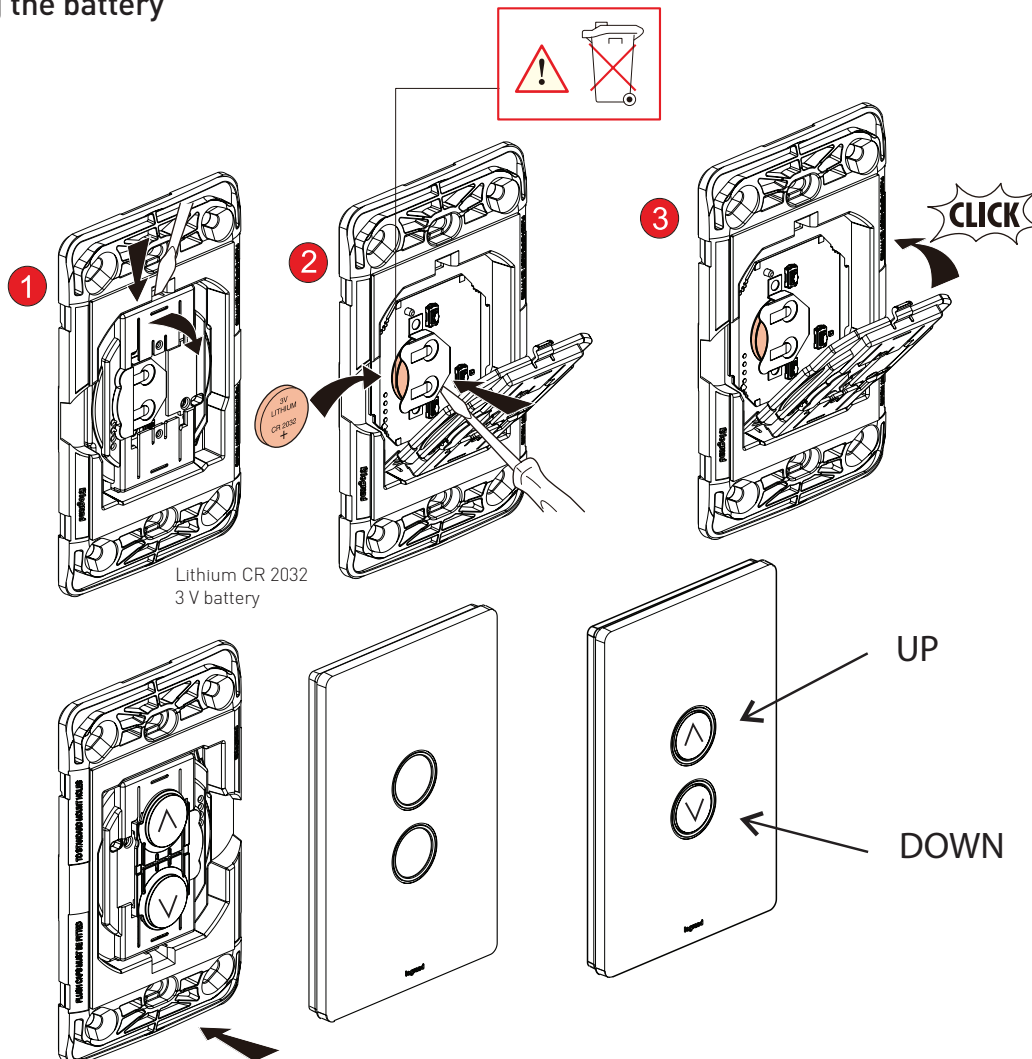


Frequency bands: 2.4 - 2.4835 GHz
Power level : <100mW

Configuring the Wireless Shutter/Blind

Open the **Home+Control App**, go to **Settings / Add Product**, select **Legrand**, select **"Wireless Switch or Product"**, then **"Roller Shutters Wireless Switch"**. Follow the step-by-step instructions.

Replacing the battery



Product Notes

- For indoor use only.
- This product must be installed and used as per these instructions.
- This product is only suitable for information technology equipment.
- This product is not suitable for installation in hazardous and/or corrosive areas.
- This product should not be installed in areas exposed to constant vibration, temperature fluctuations, or areas of high humidity.
- This product has been designed to operate in ambient temperatures 5°C to 40°C.
- This product has been designed to operate on a nominal supply voltage of 230 - 240 V a.c. 50 Hz.
- The material in this product may vary in colour from batch to batch. Colour matching from one batch to another cannot be guaranteed.
- Extended exposure to UV rays (such as exposure to direct sunlight) may cause discolouration of this product.
- Electrical installations periodically receive transient over-voltages. This product has been designed to minimise the effect of such voltages on connected equipment. It may not give full protection for extreme over-voltage transients such as those resulting from a close lightning strike.
- This product contains no serviceable parts and no attempt should be made to repair this product. If the product is faulty it should be discarded.
- This product utilises intellectual property in the form of registered designs, trademarks, and/or patents. Such intellectual property remains the property of Legrand in all cases.
- Legrand reserves the right to modify the specification of this product at any time.

Warranty

Legrand Australia Pty Ltd will honour all statutory guarantees that you as a consumer are entitled to rely upon under the Australian and New Zealand Consumer Laws against a manufacturer, including a guarantee that this product is of acceptable quality.

To make a claim under any statutory guarantee you should first contact the supplier, or retailer from whom you purchased this product.

Customer Service

For all Customer Service and Technical Support enquiries please call Monday to Friday during business hours.

Legrand Australia
1300 369 777
www.legrand.com.au

Legrand New Zealand
0800 476 009
www.legrand.co.nz

ABN: 31 000 102 661

